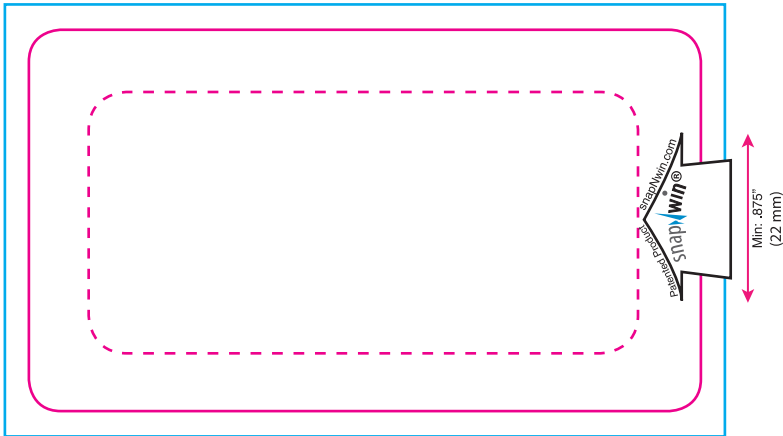


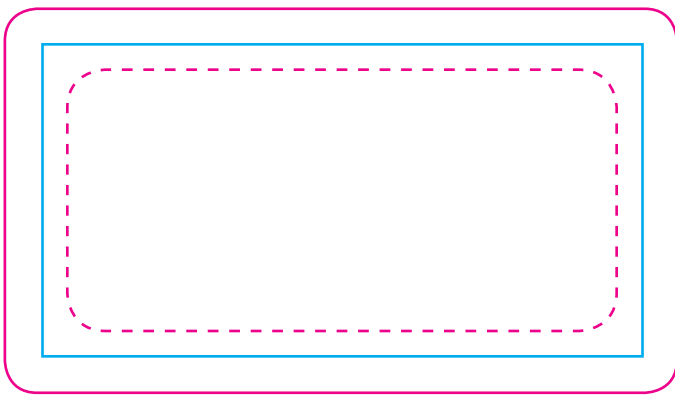
Side A: Magnetic Snap-out Side






The snapNwin logo and arrow design with identification are required on all cards on the magnet snap-out side as shown here. Use modified arrow design for dark color or black backgrounds as shown.



Side B: Inside Hidden Message



-  = Final Die Cut Card Size
-  = Snap Out Magnet Die Line
-  = Print and Image Area
(includes a .125" (3 mm) bleed)

Card Size: 2" x 3.5" (52 x 89 mm)
 All Corner Radii: .125" (3 mm)
 Snap Out Magnet: 2.875" x 1.375"
 (73 mm x 35 mm)

Side C: Opposite Card Side

